

LO-

Label and describe the parts of a  
plant

# Is a plant a living thing?

Movement

Respiration

Sensitivity

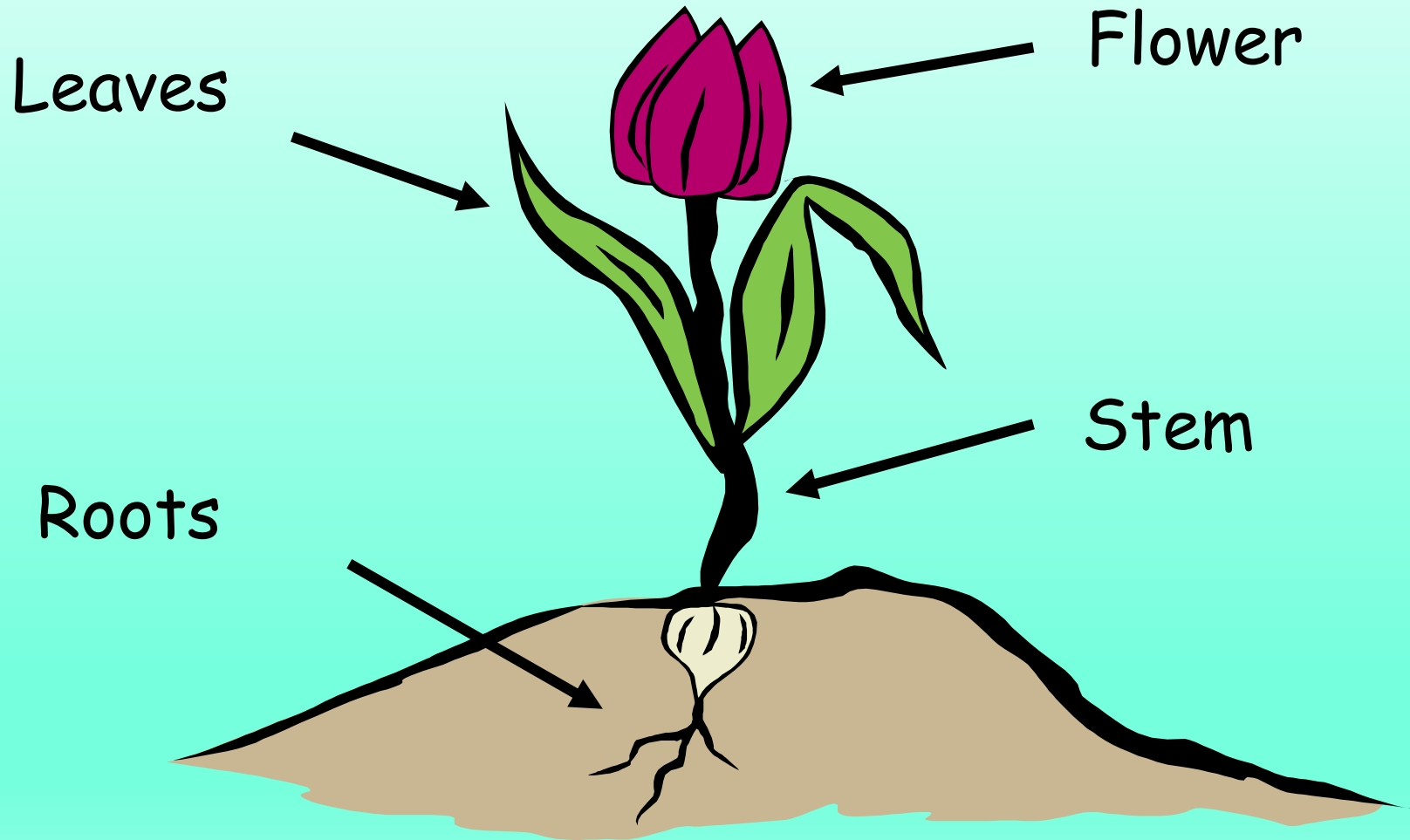
Growth

Reproduce

Excretion

Nutrition

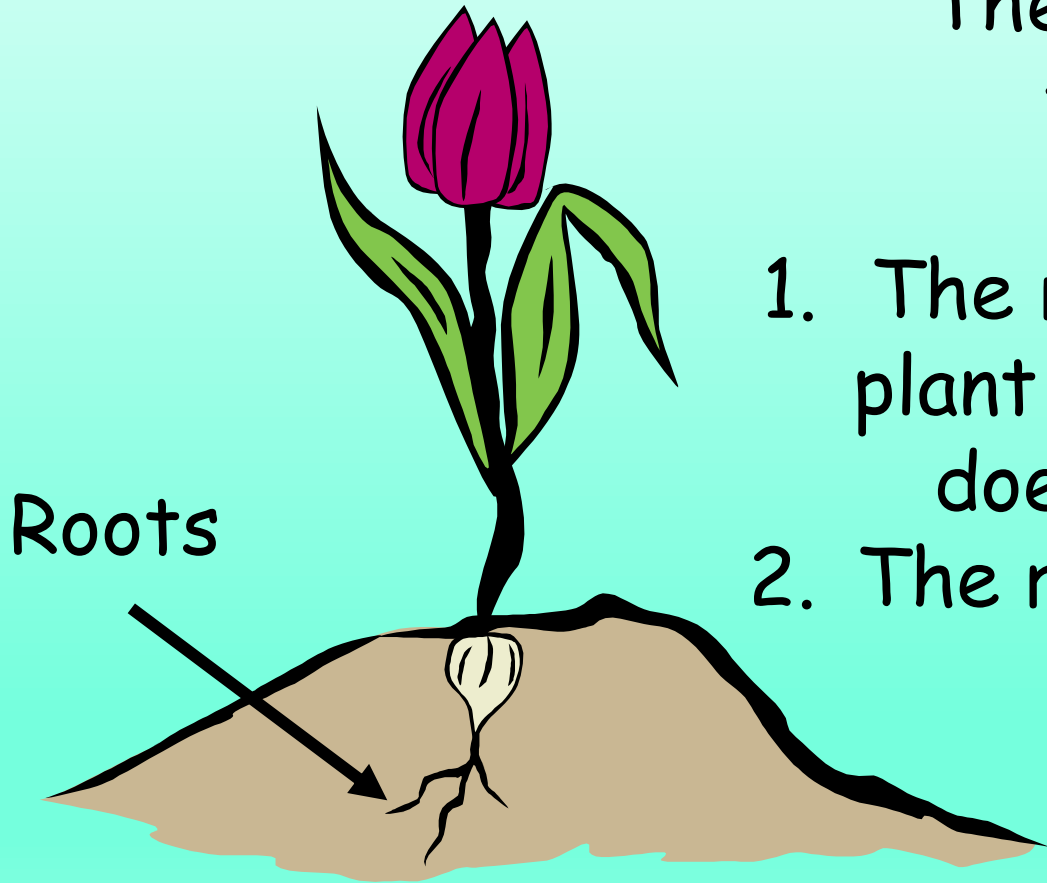
Lets start with some revision...



# What is the function of the root?

The root has two functions...

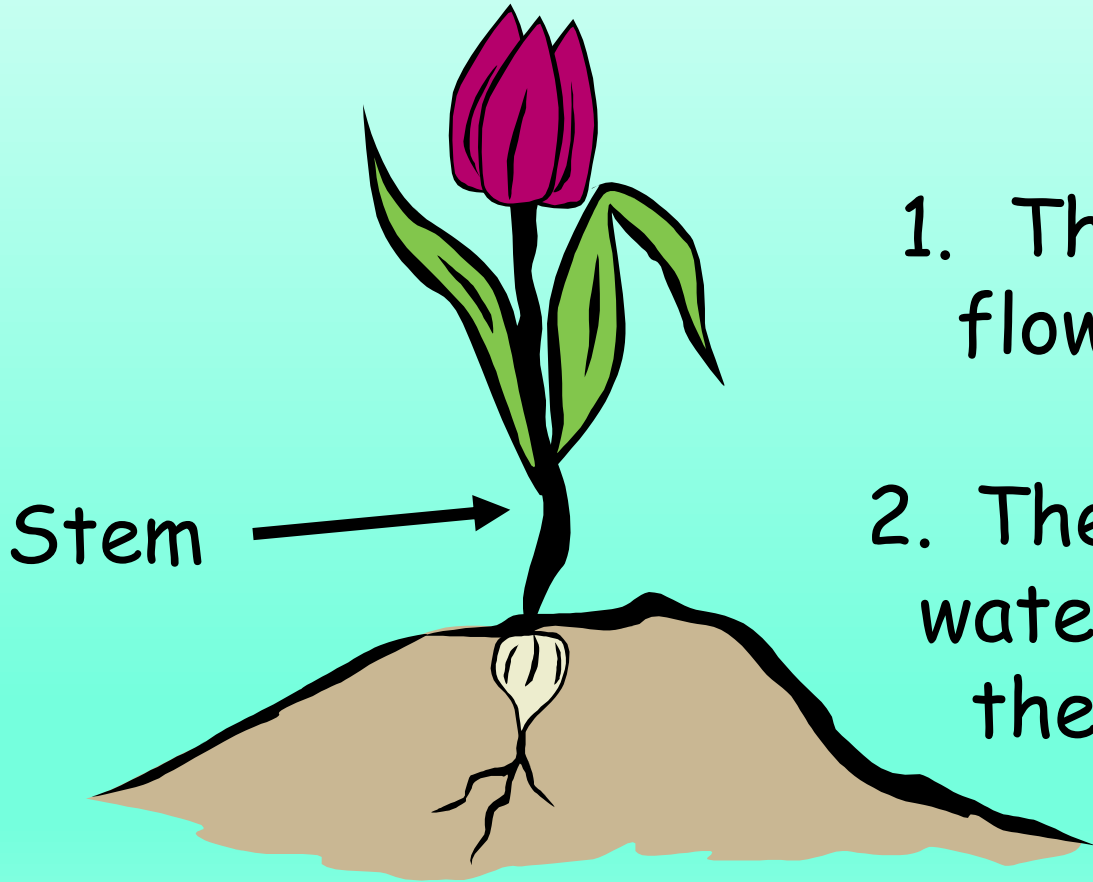
1. The roots stabilise the plant in the ground so it does not blow away.
2. The roots absorb water from the soil.



# What is the function of the stem?

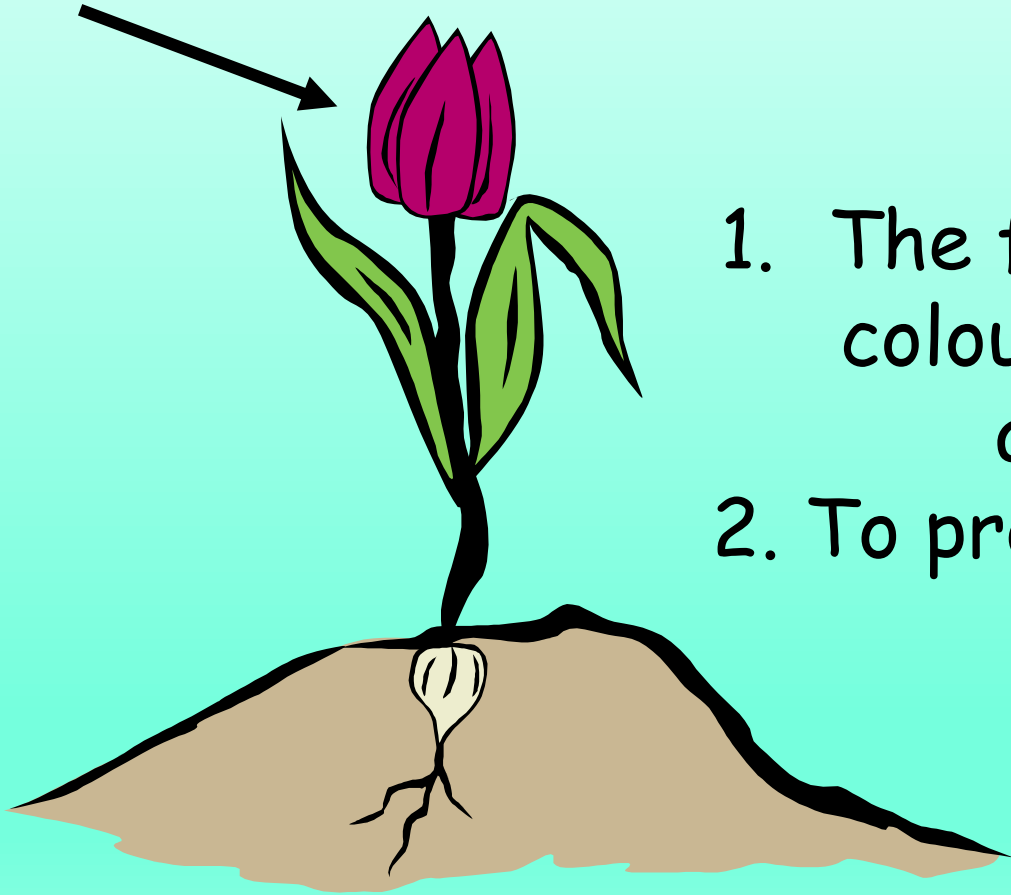
The stem has two functions...

1. The stem holds the flower up towards the sunlight.
2. The stem carries the water from the roots to the rest of the plant.



# What is the function of the flower?

Flower

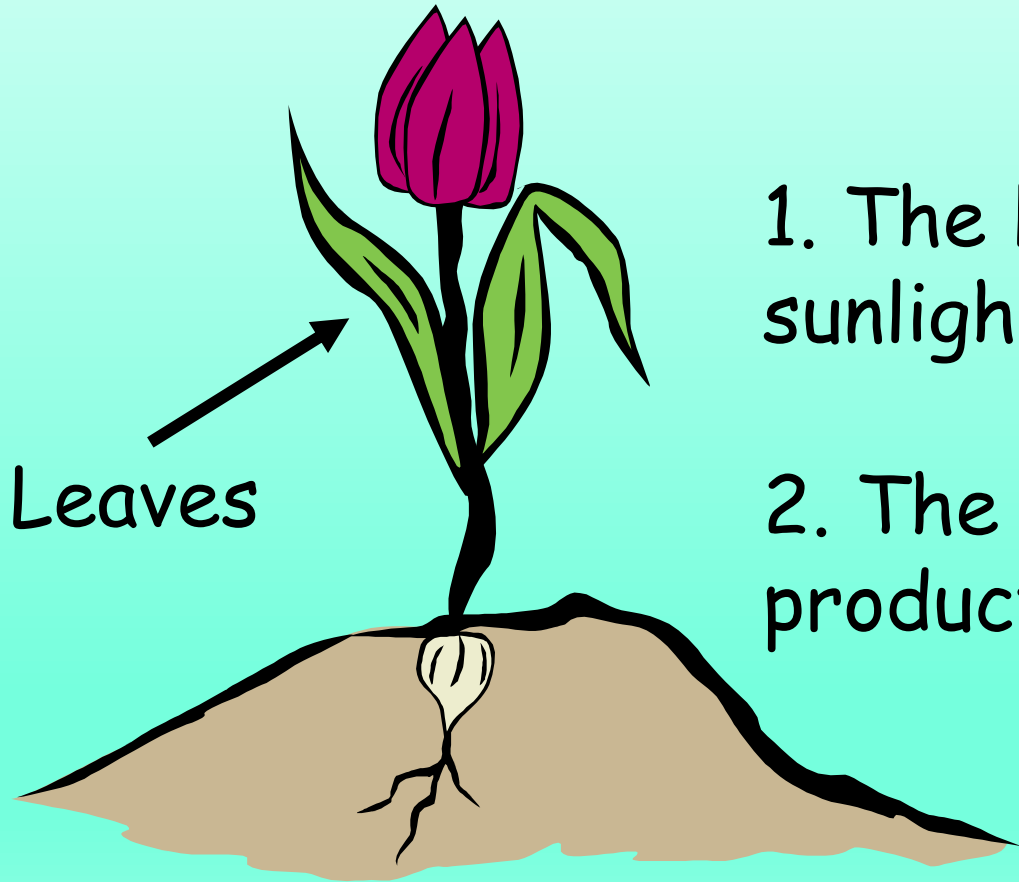


The flower has two functions...

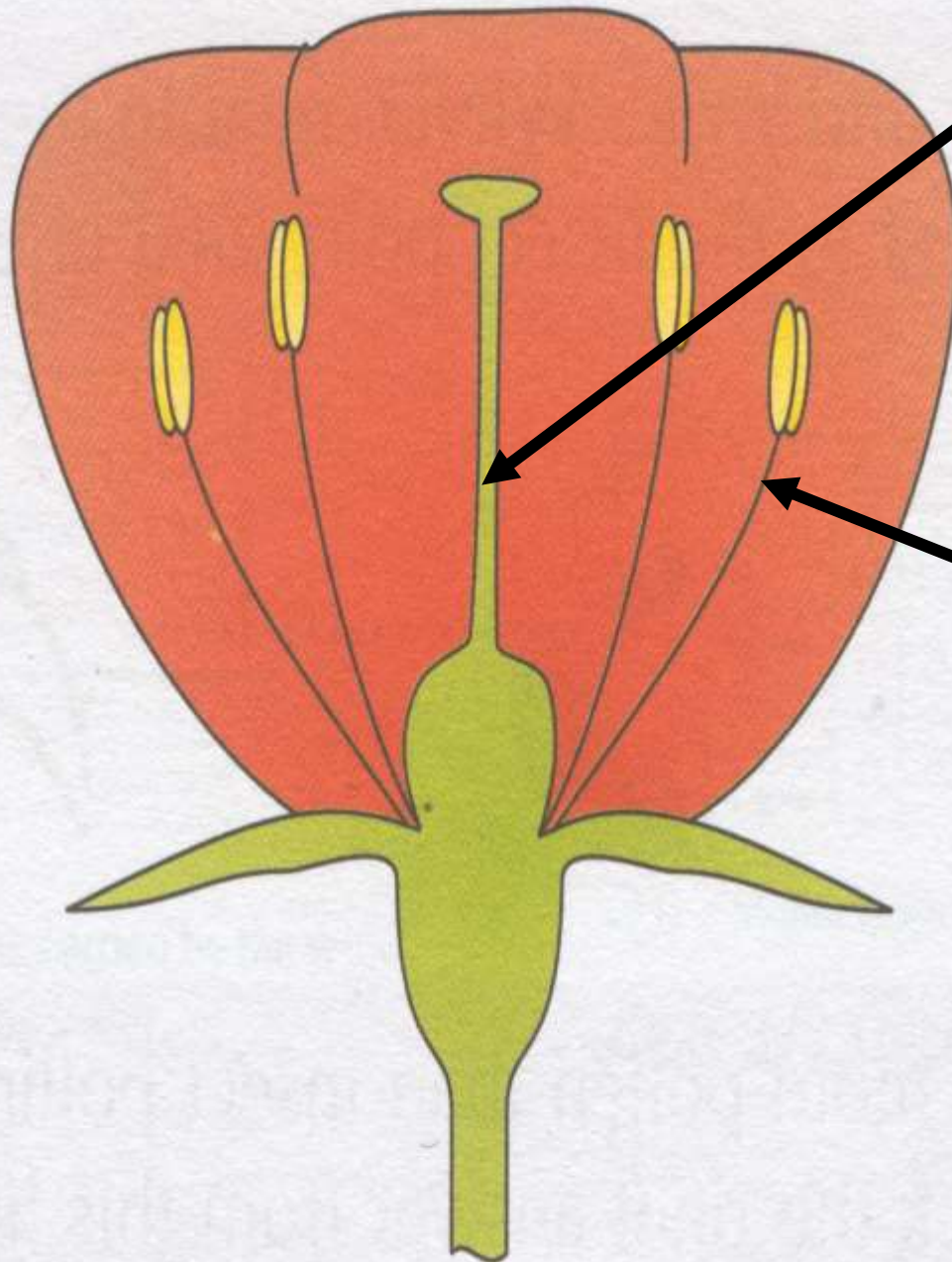
1. The flowers are brightly coloured and scented to attract insects.
2. To produce pollen.

# What is the function of the leaves?

The leaves have two functions...



1. The leaves take in sunlight and carbon dioxide.
2. The leaves release waste products.



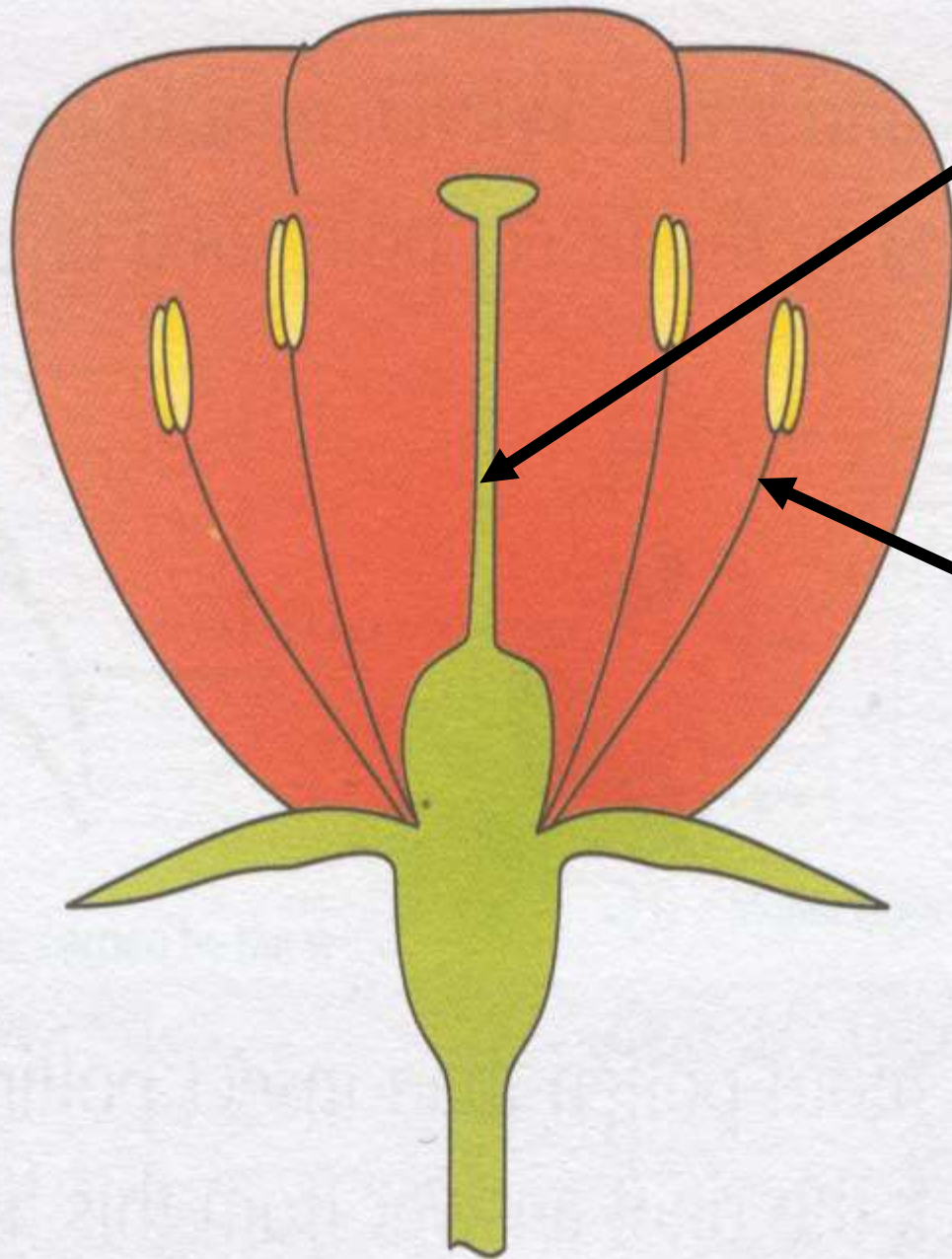
## The Carpel

The female part of the flower is called the Carpel. The carpel is sturdy and found in the centre surrounded by petals. There is only one carpel per plant.

## The Stamen

The male parts of the flower are called Stamens. These are long and flimsy and surround the Carpel. There are several stamens per plant.

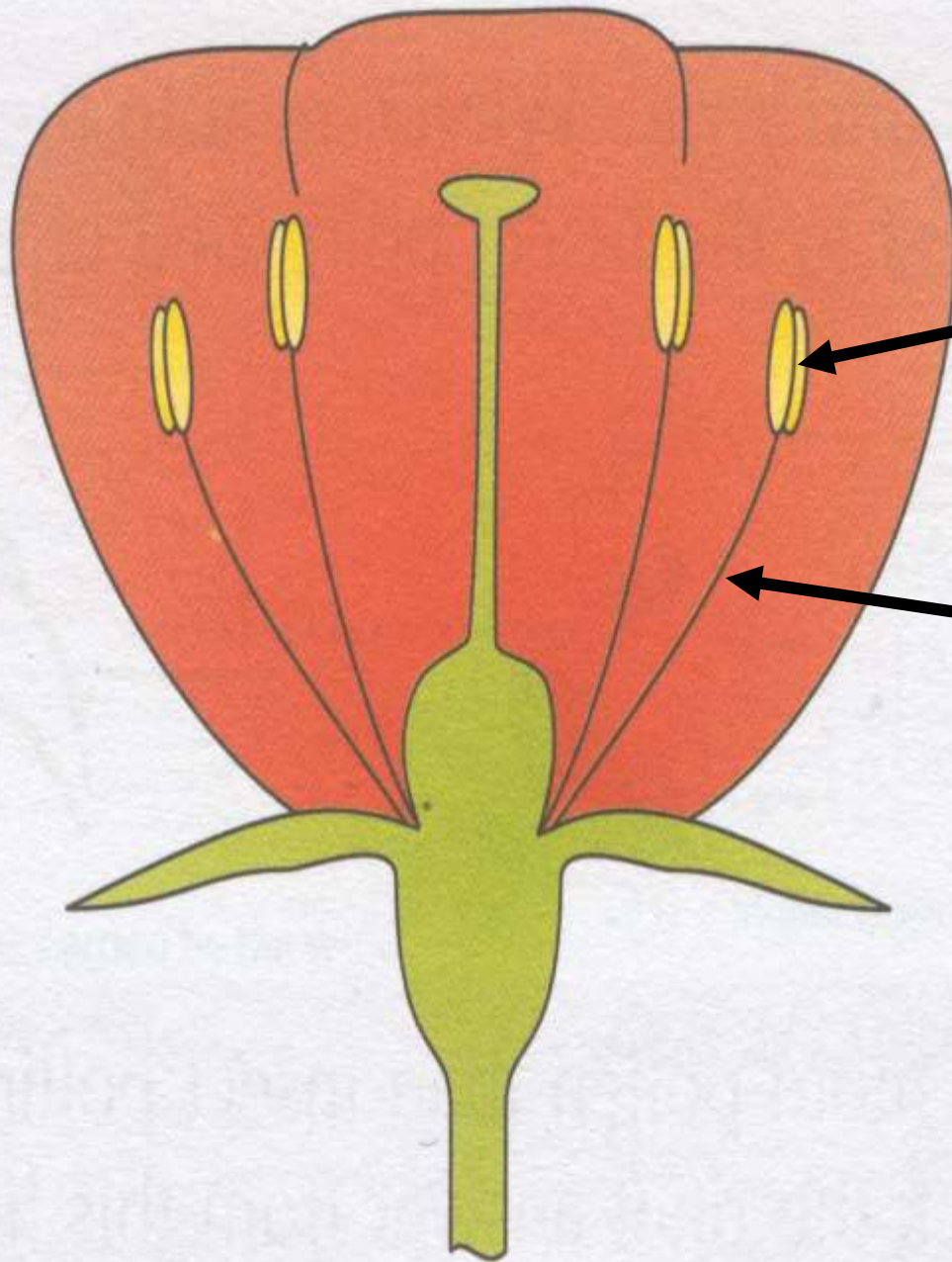




Carpel

Stamen

Can you find the  
Carpel and Stamens  
on your plant.



Now lets look more closely  
at the Stamens  
(male parts).

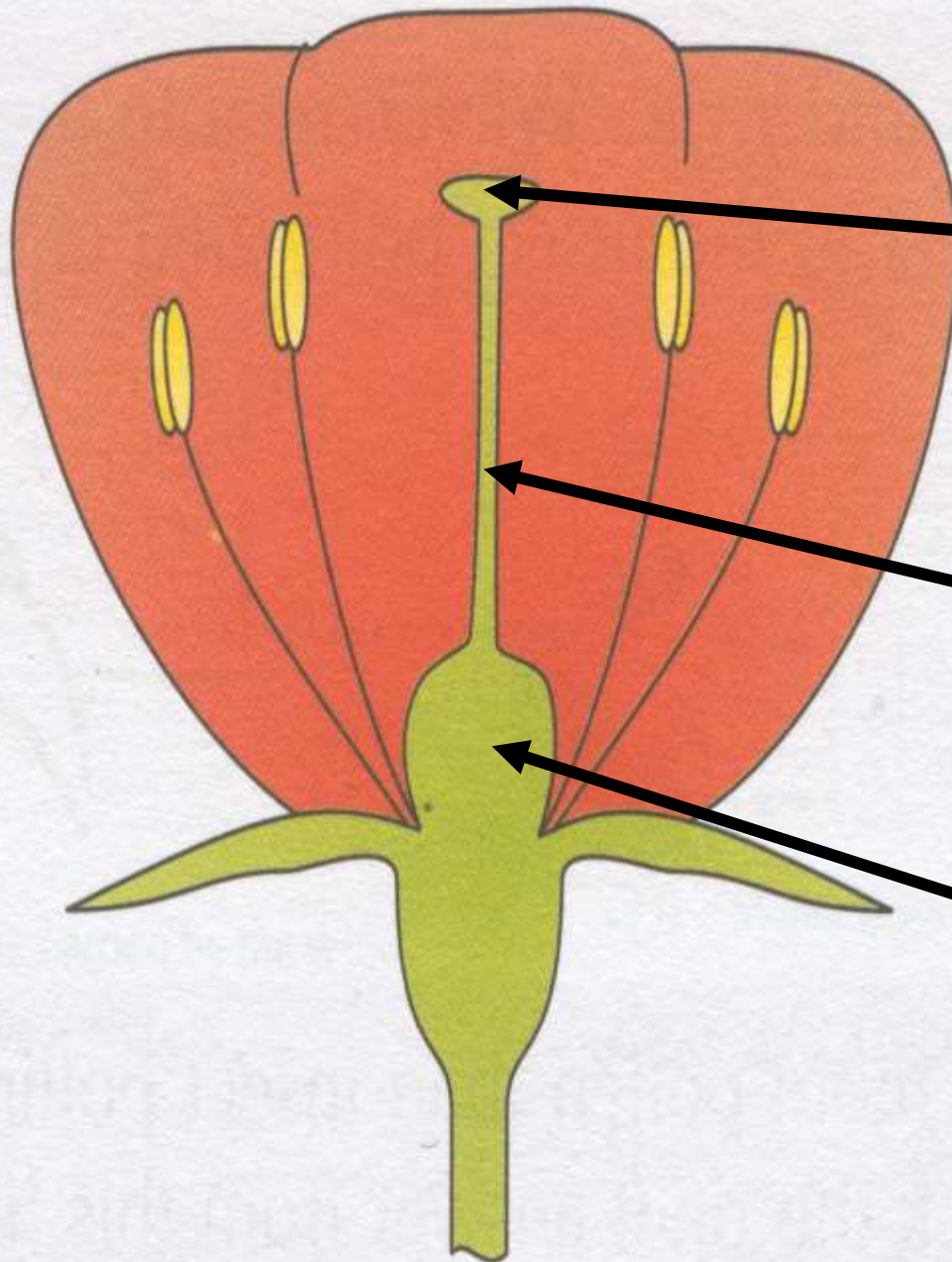
Anther

The top of the Stamen is  
called the Anther.

Filament

The Filament acts in the  
same way as a stem and  
holds up the Anther.

What is the yellow powder  
on the Anther?



Now lets look more closely at the Carpel (female parts).

Stigma

The top of the Carpel is called the Stigma. What do you notice when you touch it?

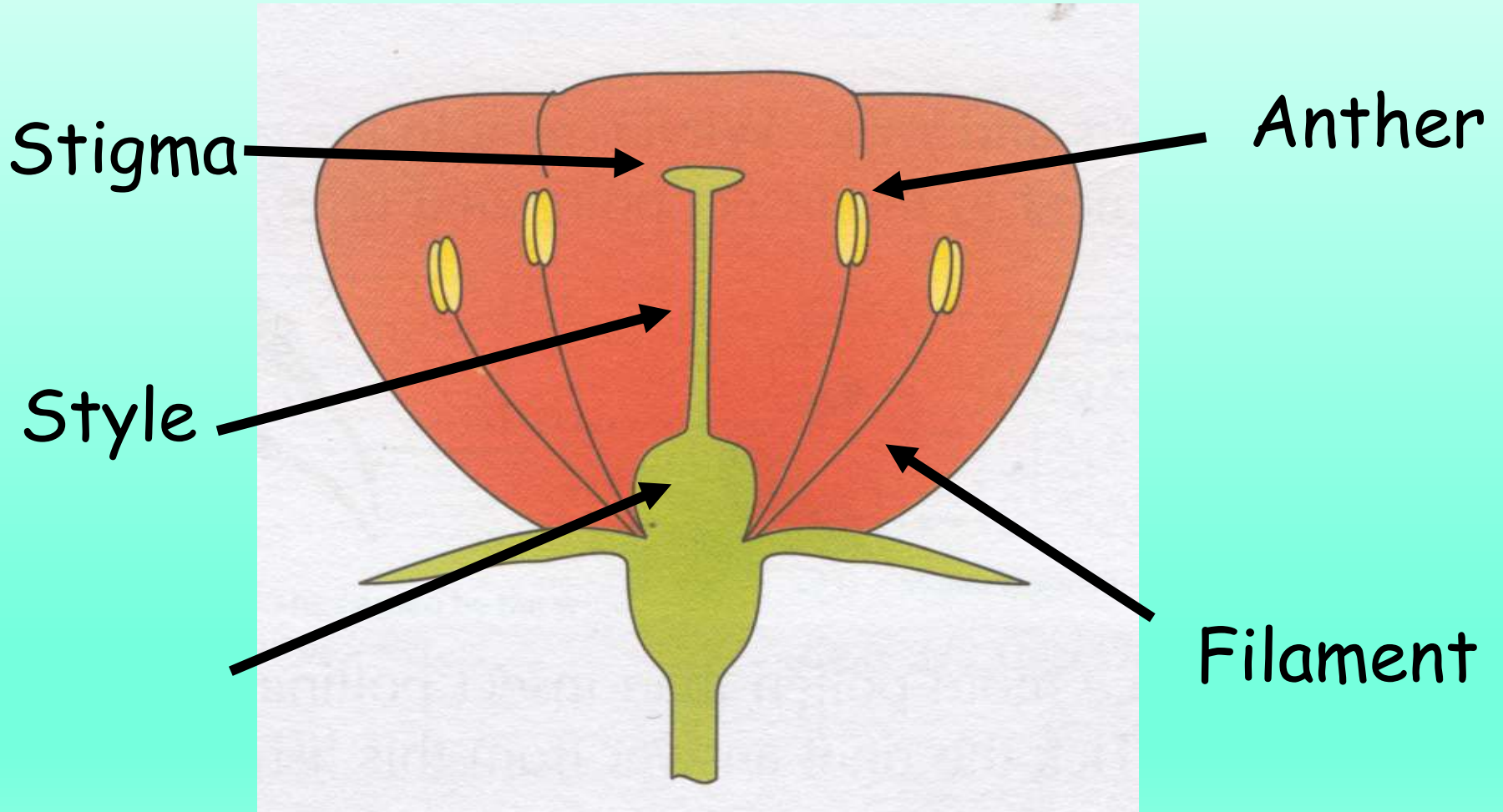
Style

The Style acts in the same way as a stem and holds up the Stigma.

Ovary

The ovary contains the eggs.

# The male and female parts of the flower



## Your Task

1. Dissect the flower.
2. Label the Flower, Roots, Stem, Leaves, Carpel, Stamen, Anther, Filament, Stigma, Style, Ovary and Sepal.
3. Explain the function of these parts.
4. Work with your learning partners.